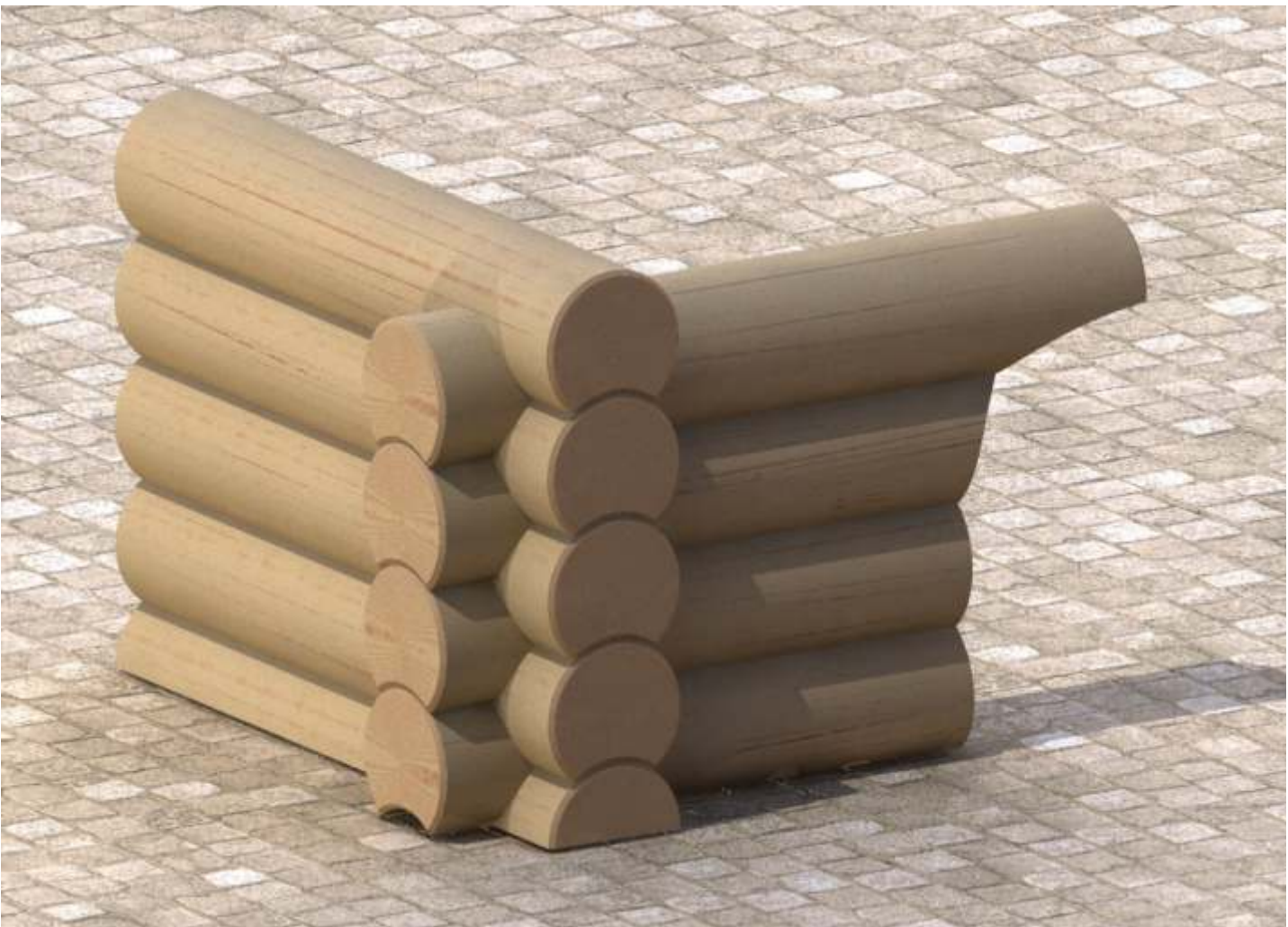


Log houses made
in the round log with
bottom groove technology



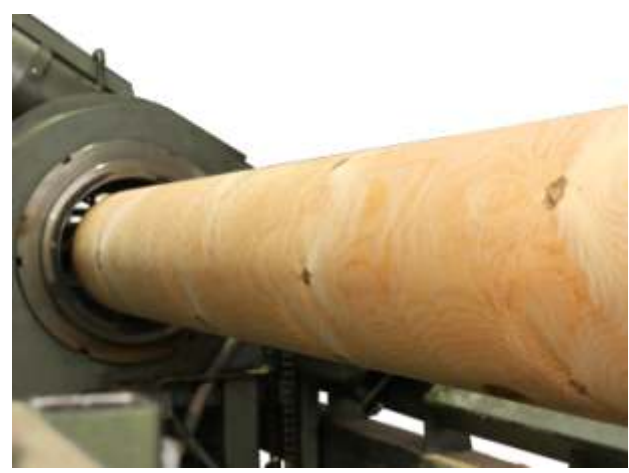
Machines for the sawmill industry



Flanged wall corner with moon shaped cuts and remains



A view from the inside of the corner



A line for manufacturing round logs with bottom grooves.

The line consists of two devices – OBT-300 turner and the OZDW-300 processor unit. The line forms the necessary basis for manufacturing round log houses.

OBT-300 turner technical details

Length	12 m
Width	1,6 m
Height	1,6 m
Main engine	2,2 kW
Max turning diameter	300 mm
Max turning length	8 m

OZDW-300 Processor technical details

Length	14 m
Width	2,2 m
Height	2,8 m
Installed power	25 kW

